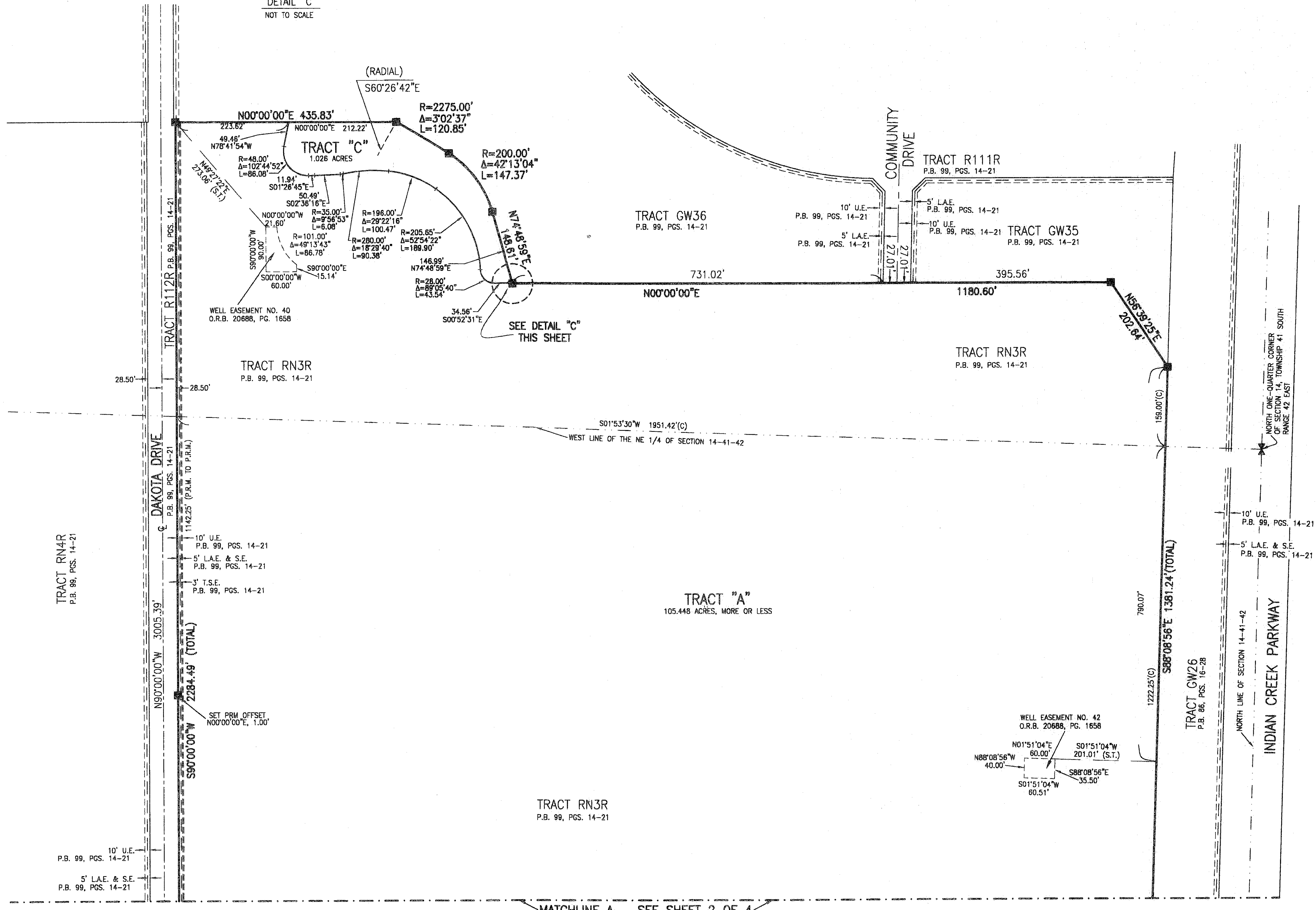
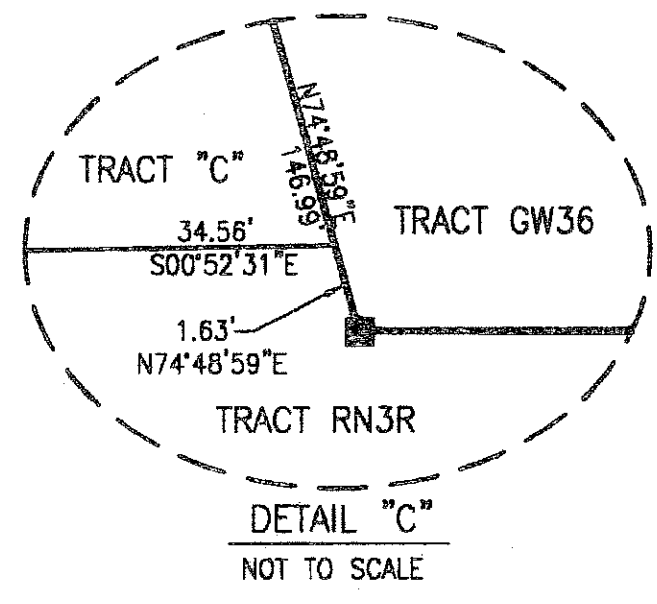
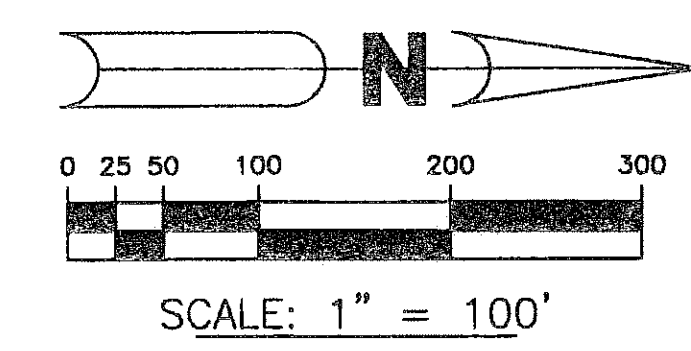


TRACT RN3R AT ABACOA - REPLAT

BEING A REPLAT OF TRACT RN3R ACCORDING TO AT ABACOA - PLAT NO. 4 REPLAT AS RECORDED IN PLAT BOOK 99, PAGES - 14 THROUGH 21 OF THE PUBLIC RECORDS OF PALM BEACH COUNTY, FLORIDA, LYING IN SECTION 14, TOWNSHIP 41 SOUTH, RANGE 42 EAST, TOWN OF JUPITER, PALM BEACH COUNTY, FLORIDA
SHEET 3 OF 4 JANUARY, 2009

THIS INSTRUMENT PREPARED BY
WILBUR F. DIVINE, P.S.M. 4190, STATE OF FLORIDA
ARCADIS U.S., INC.
ENGINEERS PLANNERS SURVEYORS
2081 VISTA PARKWAY
WEST PALM BEACH, FLORIDA 33411
LB7062 / EB7917



AREA TABULATION:

PARCEL	LAND USE	ACREAGE	SQUARE FEET
TRACT "A"	REZ	105.448	4,583,315
TRACT "B"	REZ	4.206	183,213
TRACT "C"	EXZ	1.026	44,683
TRACT "D"	EXZ	0.369	16,845
TRACT "E"	EXZ	0.713	31,058
TRACT "F"	REZ	0.142	6,188
TRACT "G"	REZ	0.106	4,704
TOTAL		112.032	4,880,114

EXZ. = EXEMPT ACREAGE
REZ. = RESIDENTIAL

- LEGEND:**
- - FOUND. PERMANENT REFERENCE MONUMENT, "WHS" WILLIAM, HATFIELD & STONER, INC.
 - - SET PERMANENT REFERENCE MONUMENT, L.B. #7062
 - Δ - DELTA ANGLE
 - L - ARC LENGTH
 - R - RADIUS
 - CB - CHORD BEARING
 - CH - CHORD DISTANCE
 - C - CENTERLINE
 - L.A.E. - LIMITED ACCESS EASEMENT
 - T.S.E. - TEMPORARY SIDEWALK EASEMENT
 - S.E. - SIDEWALK EASEMENT
 - N.R. - NOT RADIAL
 - N.T.S. - NOT TO SCALE
 - O.R.B. - OFFICIAL RECORD BOOK
 - P.B. - PLAT BOOK
 - PGS. - PAGES
 - P.S.M. - PROFESSIONAL SURVEYOR AND MAPPER
 - N.R. - NON-RADIAL
 - RAD. - RADIAL
 - R/W - RIGHT-OF-WAY
 - U.E. - UTILITY EASEMENT
 - S.T. - SURVEY TIE

